

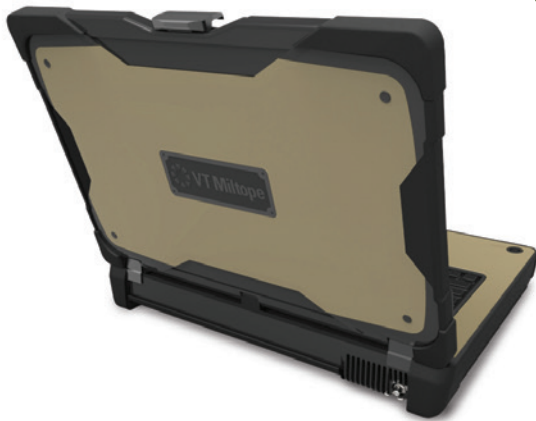
SRNC-17 SEMI-RUGGED NOTEBOOK COMPUTER

Reliable in the Extreme



MYMILTOPE

When it comes to getting down to the business side of tactical computing, nothing beats the fully rugged product line of VT Miltope. With its first new semi-rugged workstation, VT Miltope combines the best in business rugged performance and fully rugged protection to achieve new standards in mobile military computing. It's the best of both worlds. When the mission requires high performance in a field environment, VT Miltope's semi-rugged workstation answers the call. My Miltope!



SRNC-17 Features and Functions:

- Windows® 7 Professional 64 bit OS
- 17.3" High Resolution Display
- High Capacity Solid State Disk Adaptability
- Dual Storage Capability
- Expandable Media Bay Options
- Security Feature Options
- Enhanced Chassis Ruggedization
- Thermal Management



SPECIFICATIONS

PROCESSOR:

Intel® i7 4910MQ Quad-Core Processor, 2.9 GHz,
8 MB Intel® Smart Cache

Intel® i7 4940MX Quad-Core Processor, 3.1 GHz,
8 MB Intel® Smart Cache*

OPERATING SYSTEM:

Windows® 7 64 bit, Centos® Linux®*

RAM:

32 GB 1600 MHz DDR3L SDRAM*

VIDEO:

NVIDIA K1100M Graphics Card, 2GB GDDR5, 256 bit
NVIDIA K5100M Graphics Card, 8GB GDDR5, 256 bit*

STORAGE:

PRIMARY: SATA II SED 7200rpm up to 1TB
SATA III SE SSD Up to 1TB*

SECONDARY: Same storage options as Primary*

FLASH: 128GB or 256GB PCIe SSD (M.2)*

DISPLAY:

17.3" 1920x1080 diagonal LED FHD UWVA anti-glare

KEYBOARD/POINTING DEVICE:

Environmentally sealed and backlit full size QWERTY
keyboard, Image Sensor touchpad with gesture support
and 2 discrete buttons (WLAN on/off and mute)

INTERFACES:

2x USB 3.0, 1x USB 2.0, 1x USB 3.0 Charging,
2x RS232/422/485 Serial Port, 1x DisplayPort,
1x VGA Port, 1x Thunderbolt Port, 2x GB Ethernet Port,
Stereo Microphone in, Stereo Headphone/line-out,
AC Power, WiFi 802.11 ac +BT 4.0*

PERIPHERALS:

DVD +/-RW, BluRay ROM*, BluRay R/RE*, Express
Card/54 Slot, Smart Card/CAC Reader, 720p HD
WebCAM*, Rugged Transit Case*

PHYSICAL:

Dimensions 16.72"W x 12.61"H x 3.1"D;
Weight 13.75 lbs. (configuration dependent)

POWER:

230W AC adapter, 230W AC Adapter (CE 102 Compliant)*,
83 WHr Li-ION Battery, 75 WHr Li-ion Long Life Battery*,
200W DC adapter MIL-STD-1275 compliant*

ENVIRONMENTALS

HIGH TEMPERATURE:

MIL-STD-810G, Method 501.5, Procedure I,
(Storage) to 70°C; Procedure II, (Operational) to 52°C

LOW TEMPERATURE:

MIL-STD-810G, Method 502.5, Procedure I,
(Storage) to -32°C; Procedure II, (Operational) to -18°C

TEMPERATURE SHOCK:

MIL-STD-810G, Method 503.5, Procedure I-C,
(-18°C to 21°C) and (52°C to 21°C)

VIBRATION:

MIL-STD-810F, Method 514.5, Procedure I

SHOCK:

Drop: MIL-STD-810G, Method 516.6, Procedure IV, 26
drops @ 36"

Functional: MIL-STD-810G, Method 516.6, Procedure I
Bench: MIL-STD-810F, Method 516.5, Procedure VI

BLOWING RAIN:

MIL-STD-810G, Method 506.5, Procedure I,
1.8" per hour at 20 mph wind speed operational, for
30 minutes/each surface

SAND:

MIL-STD-810G, Method 510.5, Procedure II

DUST:

MIL-STD-810G, Method 510.5, Procedure I

ALTITUDE:

MIL-STD-810G, Method 500.5,
Operational: Procedure II to 15,000 feet;
Non-Operational: Procedure I to 40,000 feet

HUMIDITY:

MIL-STD-810G, Method 507.5, Procedure II

SALT FOG:

MIL-STD-810G, Method 509.5, Procedure I

EMI:

FCC Class B; MIL-STD-461F

ESD:

MIL-STD-464A, Section 5.7.3, 25kV Pulse

SAFETY:

UL/IEC 60950

(* Denotes available system options